

## **Town of Cuba Tax Reassessment Review of the impact on the Cuba Lake District**

The following are summary results using various data obtained by Terry Kelley to analyze The Changing Impacts on the Cuba Lake District from the initial publication of 2009 FMV through the grievance process.

### Attachments:

1. Summary Tabulation of key data.
2. Chart showing Tax ID 144.22-1-XXX.x increase in FMV from 2008 to 2009 before and after BAR.
3. Chart showing Tax ID 153.10-1-XXX.x increase in FMV from 2008 to 2009 before and after BAR.
4. Chart showing Tax ID 144.22-1-XXX.x reduction in FMV from before BAR to after BAR.
5. Chart showing Tax ID 153.10-1-XXX.x reduction in FMV from before BAR to after BAR.

Note that when reading these charts, the X-axis numbers are not consistent from chart to chart due to the different sorts used in setting up the charts. The X-axis numbers are strictly data points unique to each chart.

**Town of Cuba Tax Assessment  
Summary Data  
Cuba Lake District**

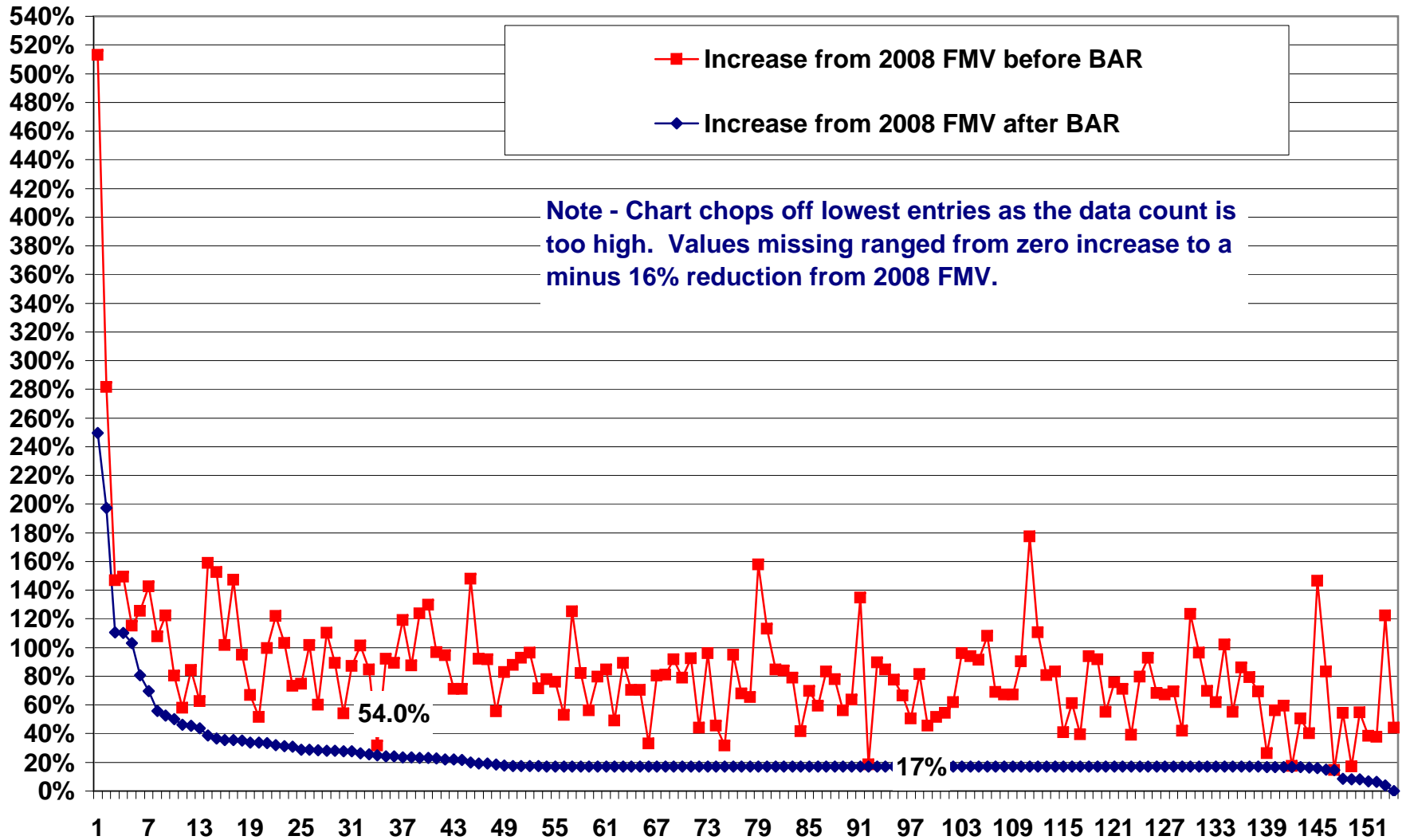
<b>Tax ID's Looked at:</b>			
<b>144.22-1-xxx.x</b>	<b>Leased Land with Lake Frontage</b>		
<b>153.10-1xx</b>	<b>Fee-Based Land abutting Lake frontage</b>		
<b>Property Codes</b>	<b>Property Codes 210; 260; 270.</b>		

<b>Property ID's Examined:</b>	<b>Total</b>	<b>144.22-1-xxx.x</b>	<b>153.10-1xx</b>
Total in category	225	214	11
2009 FMV before reduction	<b>\$43,848,600</b>	<b>\$41,108,500</b>	<b>\$2,740,100</b>
2008 FMV	<b>\$24,528,150</b>	<b>\$23,260,250</b>	<b>\$1,267,900</b>
2009 FMV before reduction - Increase from 2008	78.8%	76.7%	116.1%
Quantity of BAR Review	172	161	11
Quantity Apparently not Applying for BAR	53	53	0

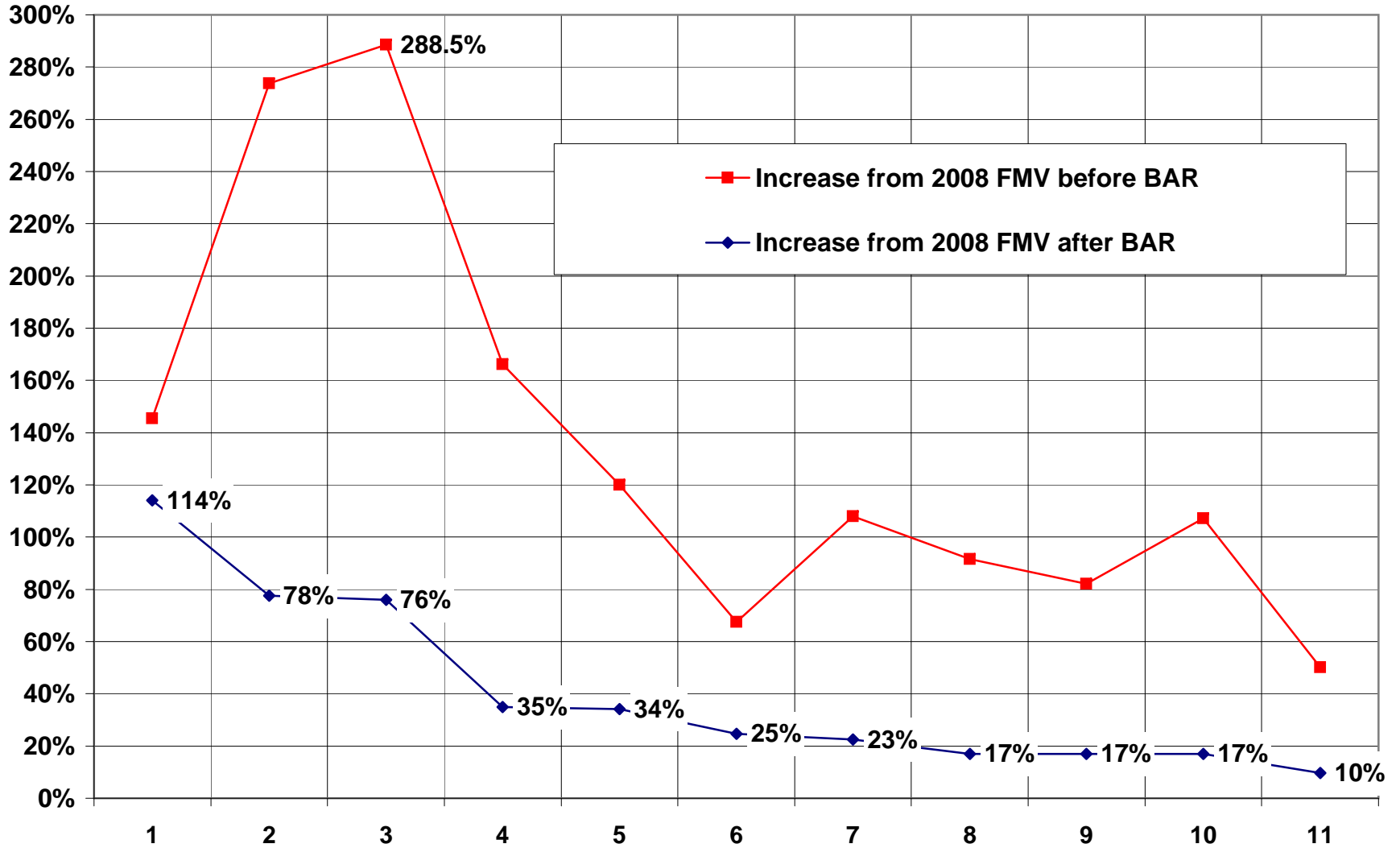
<b>For those who went through BAR:</b>				<b>153.10-1xx Land Value</b>
Quantity of BAR Review	172	161	11	11
2009 FMV Before BAR Review	<b>\$33,822,000</b>	<b>\$31,081,900</b>	<b>\$2,740,100</b>	<b>\$392,692</b>
2009 FMV After BAR Review	<b>\$22,443,927</b>	<b>\$20,745,756</b>	<b>\$1,698,171</b>	<b>\$372,692</b>
2008 FMV	<b>\$18,315,650</b>	<b>\$17,047,750</b>	<b>\$1,267,900</b>	<b>\$99,359</b>
BAR %Reduction from First published 2009 FMV	33.6%	33.3%	38.0%	5.1%
2009 before BAR % increase over 2008 FMV	84.7%	82.3%	116.1%	295.2%
<b>2009 after BAR % increase over 2008 FMV</b>	<b>22.5%</b>	<b>21.7%</b>	<b>33.9%</b>	<b>275.1%</b>

<b>For Those who did not apply for BAR:</b>			
Quantity Apparently not Applying for BAR	53	53	0
2009 FMV	<b>\$10,026,600</b>	<b>\$10,026,600</b>	<b>\$0</b>
2008 FMV	<b>\$6,212,500</b>	<b>\$6,212,500</b>	<b>\$0</b>
2009 % increase over 2008 FMV	61.4%	61.4%	

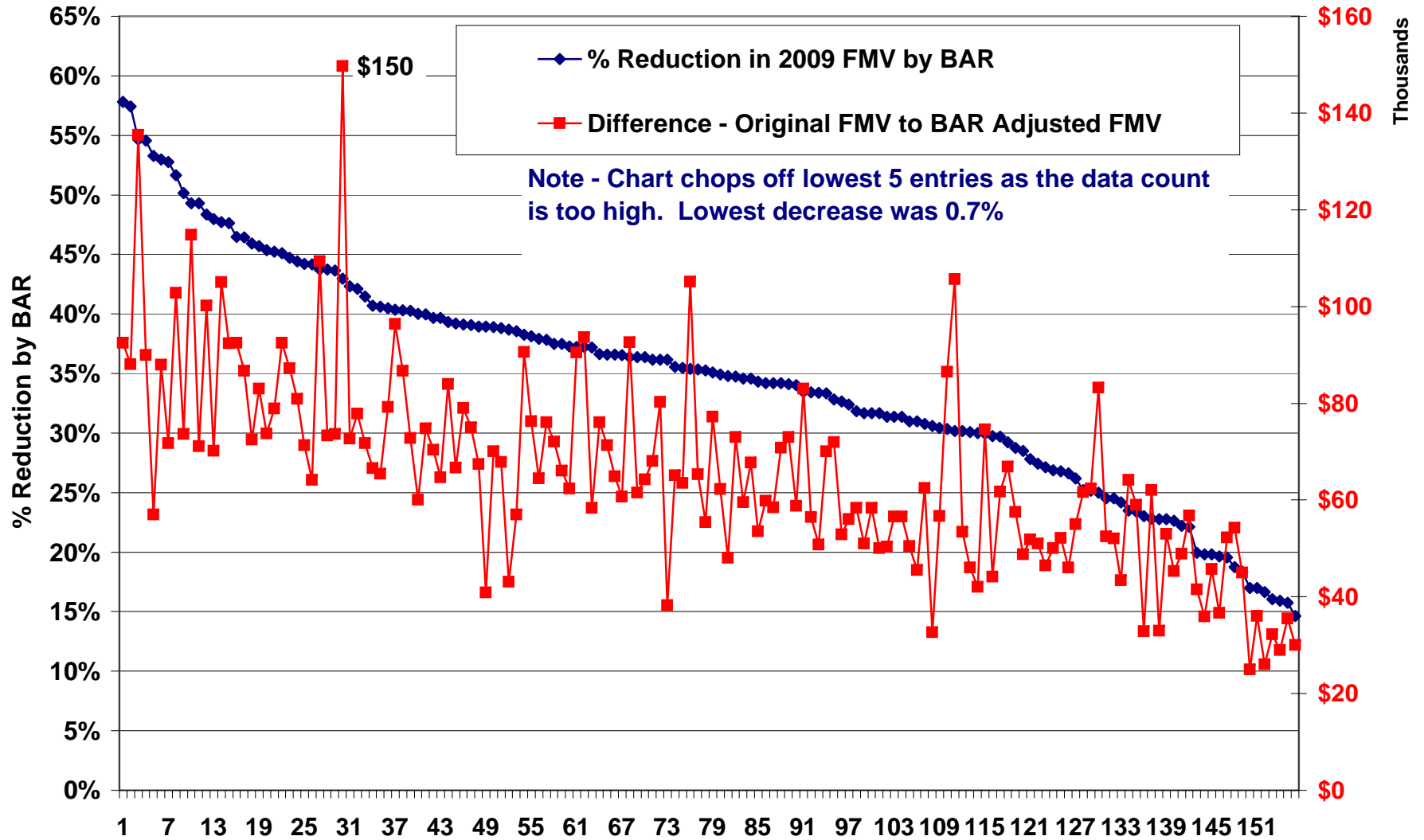
### Tax ID 144.22-1; 2009 FMV Increase from 2008 FMV



Tax ID 153.10; 2009 FMV Increase from 2008 FMV



### Tax ID 144.22-1; 2009 FMV Reduction by BAR



Tax ID 153-1; 2009 FMV Reduction by BAR

